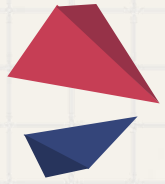


JAB3 Installation Guide

How to Build a 2.1 System with WONDOM JAB2 and JAB3





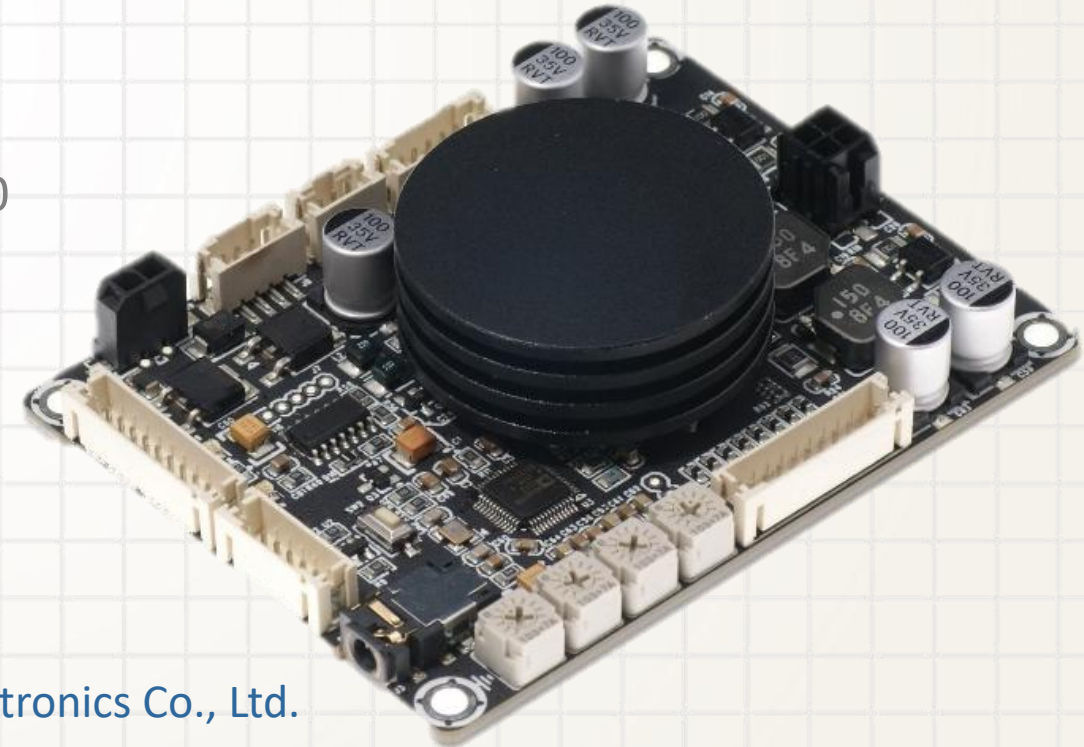
What is JAB3 ?

JAB3 series is an All-in-one amplifier series with DSP integrated, covering amplifiers from 2 x 30W, 2 x 50W to 1 x 60W, 1 x 100W.

When working with JAB2, it is a complete 4.0, 2.1 or 0.2 (PBTL) audio system with control interfaces and signal processing. (0.2 refers to stereo version, and its connection is the same as 4.0.)

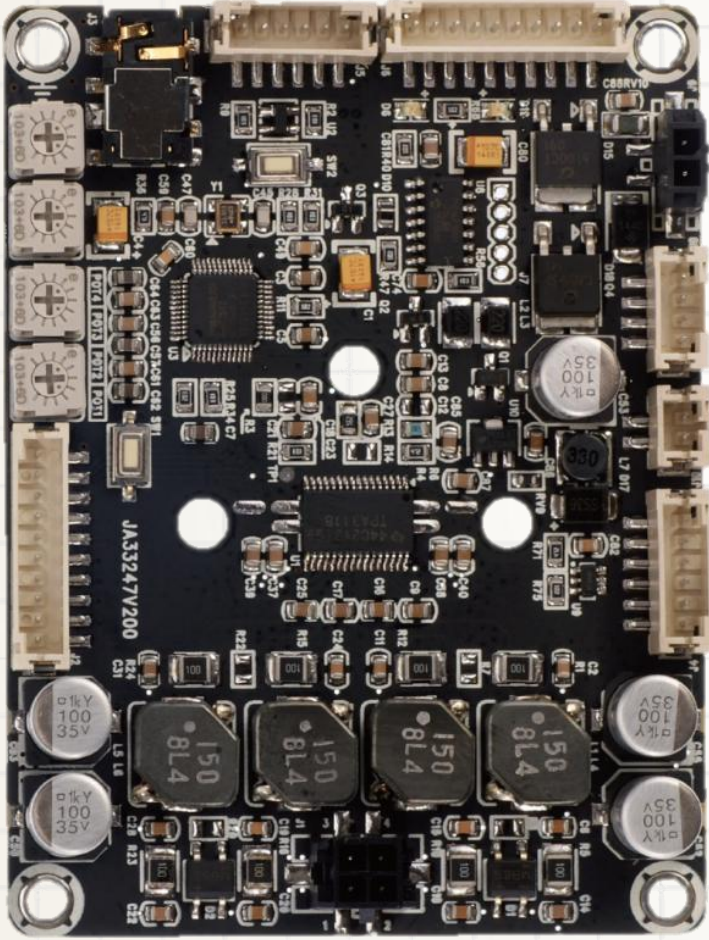
The application ranges from active louderspeaker concepts (digital 3 way 3 unit, 2 way 2 unit crossover, bass enhancement, etc.) and realizes the transformation from 2.0 to 2.1 (when used with JAB2).

Following is the instructions on how to build a 2.1 system with WONDOM JAB2 and JAB3.



Steps & Connections

Brief Introduction for ports on board



Step 1: Power

Powered by Power Adapter

Powered by WONDOM Battery Protection and Balancing Board

Step 2: Input Connection

AUX In cable

Interface Extension Board

Step 3: Output Connection

Speaker Cable

Step 4: Connection between JAB2 and JAB3

Audio Connection

Control Connection

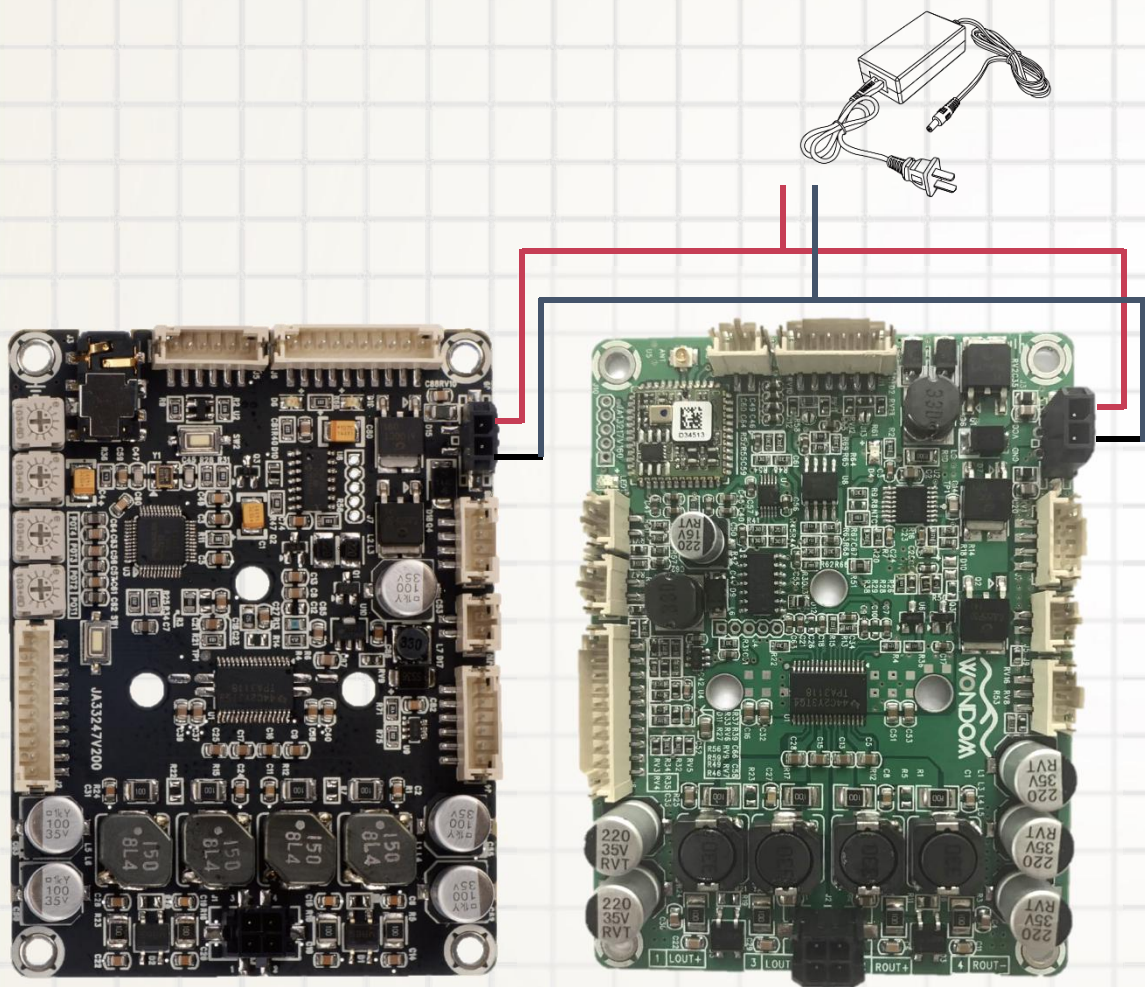
Step 5: External LED Indicator & Control

External LED Indicator
Control



Steps & Connections

Step 1: Power (Powered by Power Adapter)

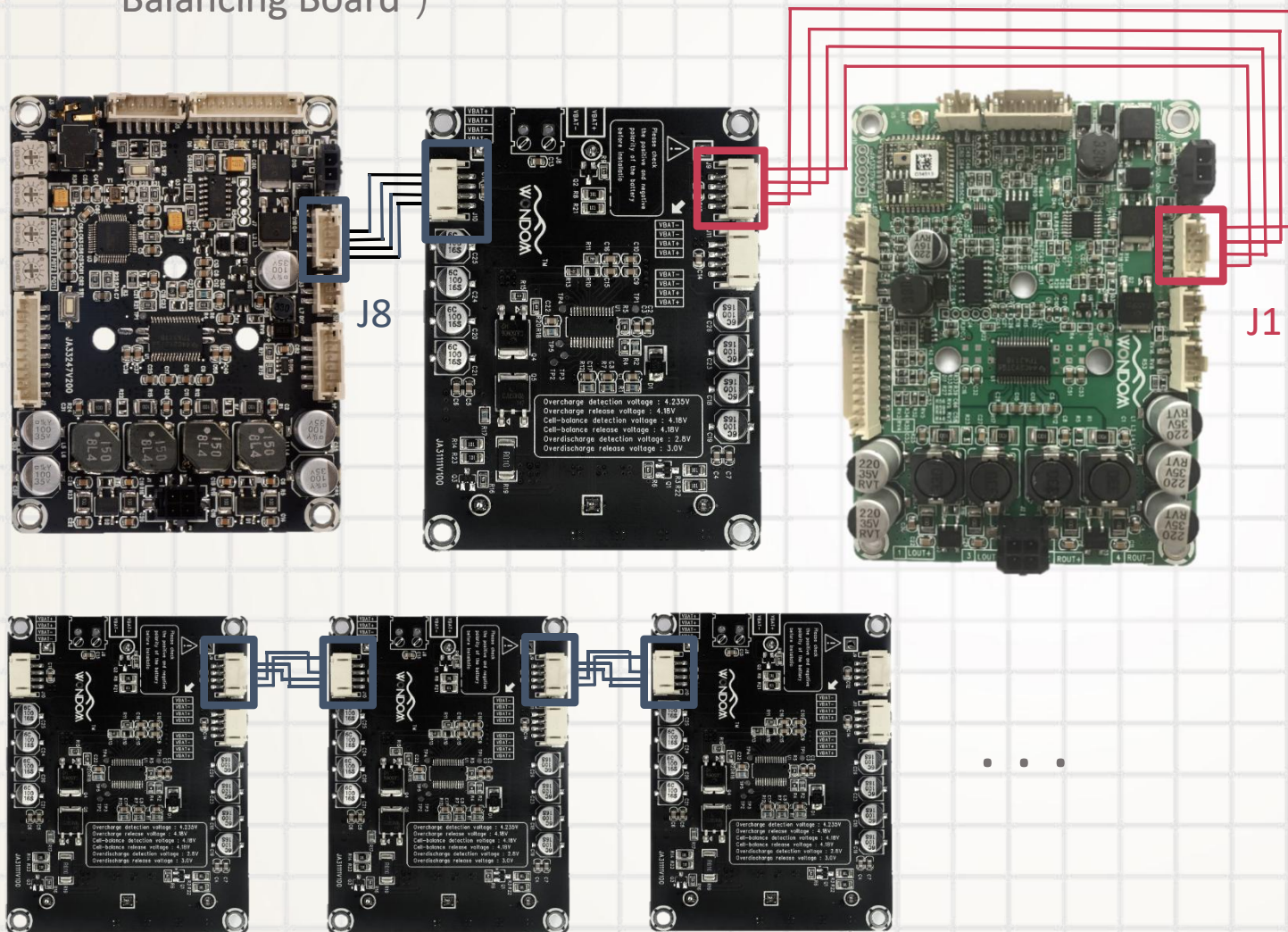


- JAB2 and JAB3 can be powered separately by two different adapters.
- It is suggested to power JAB2 and JAB3 using one adapter, see connection in picture.

Note: Sure Electronics will provide one power cable together with each JAB main board. If customers want JAB2 and JAB3 to be powered by one adapter, please buy AA-JA1116 functional cables kit for JAB2 and JAB3.

Steps & Connections

Step 1: Power (Powered by WONDOM Battery Protection and Balancing Board)



- Connect J8 on JAB3 and J1 on JAB2 to any two of three ports of WONDOM Battery Protection and Balancing Board.

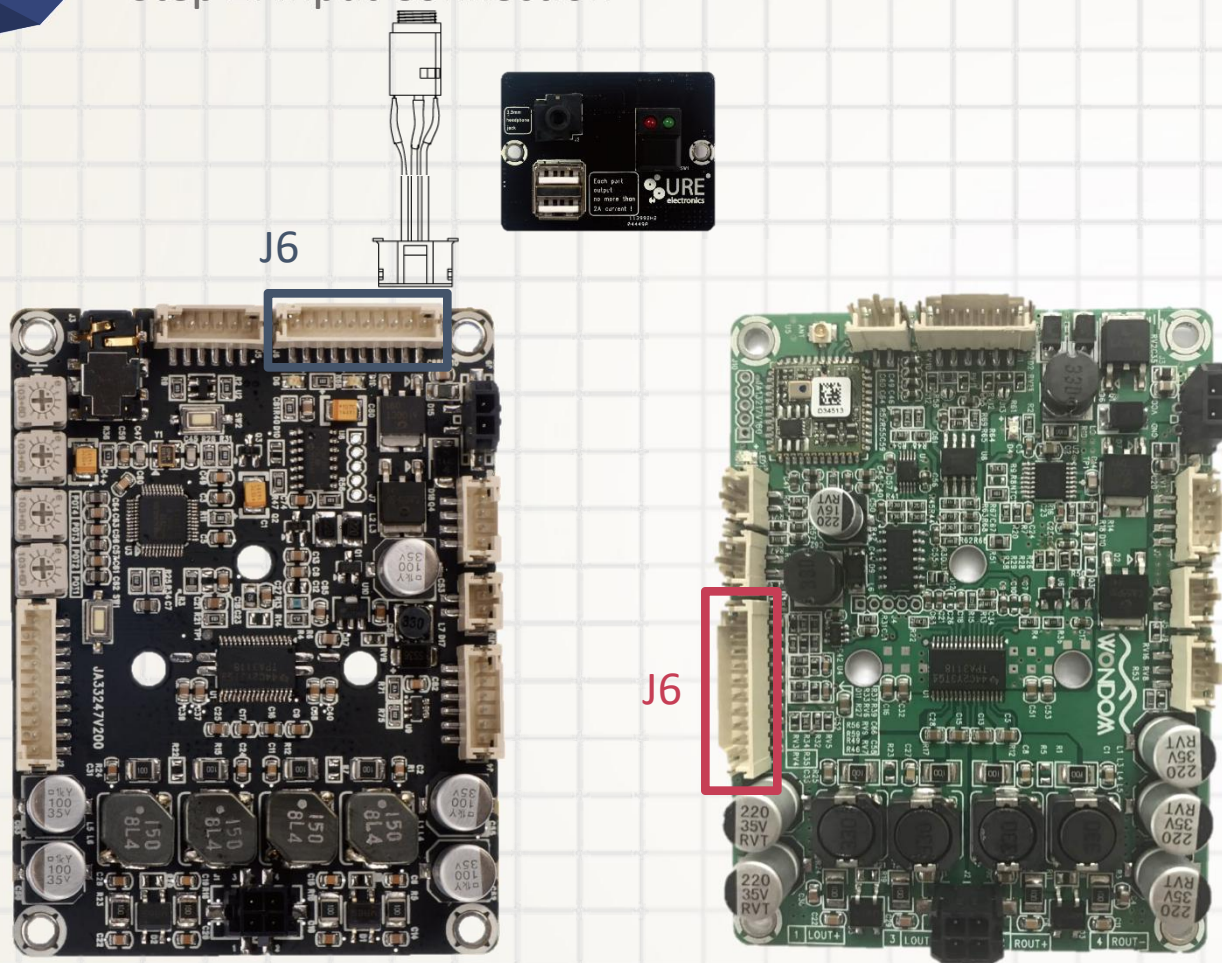
Note:

1. Three ports of Battery Protection and Balancing Board have the same function. Two or more battery protection boards can be paralleled to get large capacity while the output voltage will not increase.
2. When you need to charge the batteries, connect power adapter to JAB2 instead of JAB3. JAB3 and Battery Protection and Balancing Board cannot be used to charge the batteries.



Steps & Connections

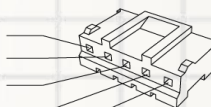
Step 2: Input Connection



If you don't want to use the Bluetooth on JAB2 as the signal input, there are two ways to get analog signal input:

- AUX In cable(Connect 5Pos AUX cable to J6 on JAB3, only five pins will be required, see picture.)

PIN 1 LED2
PIN 2 KEY2
PIN 3 RIN
PIN 4 GND
PIN 5 LIN



Extension Connector:
J6 PH-10PIN-2MM

Pin	Definition
1	VCC
2	VCC
3	GND
4	LED1
5	KEY1
6	LIN
7	GND
8	RIN
9	KEY2
10	LED2

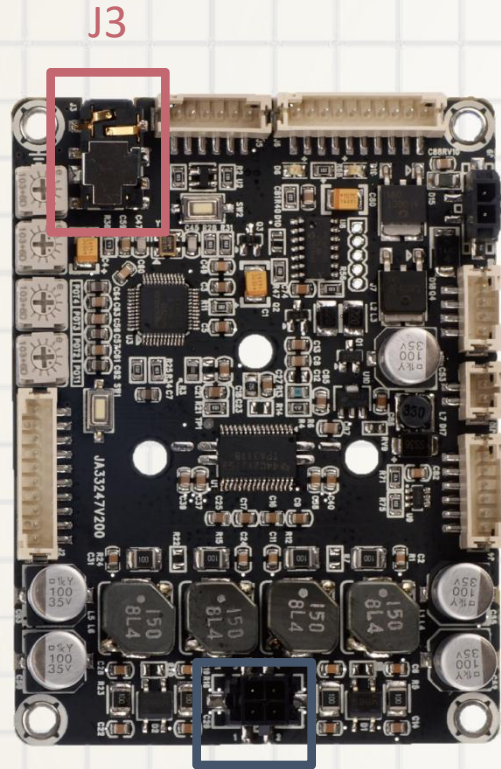
- Interface Extension Board

Note: When the Interface Extension Board is connected to JAB3, the ON/OFF switch will malfunction.

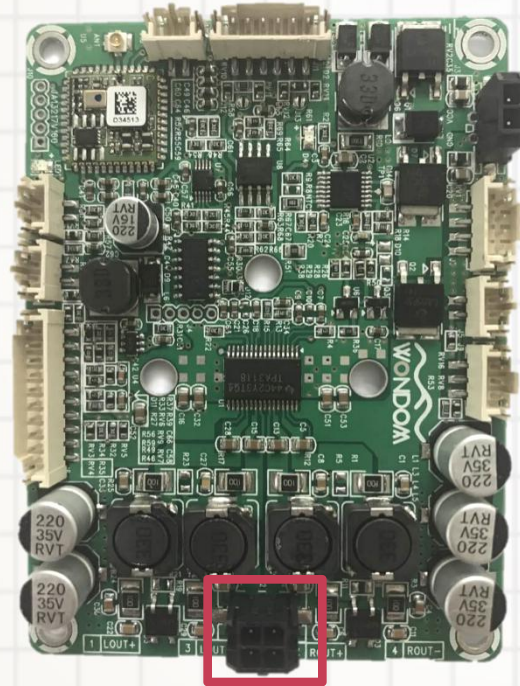


Steps & Connections

Step 3: Output Connection

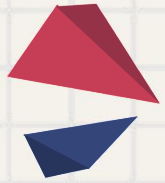


J10



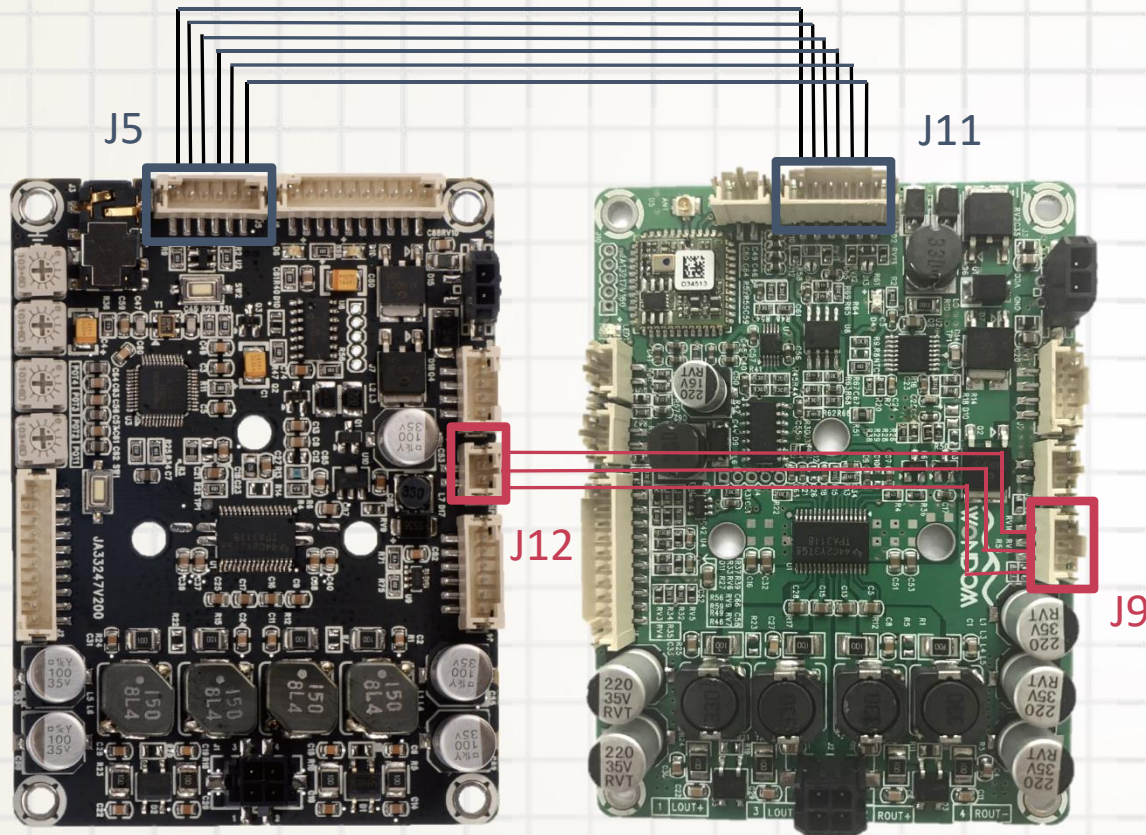
J2

- Connect J10 on JAB3 to Subwoofer.
- Connect J2 on JAB2 to Stereo Loudspeaker.
- J3 on JAB3 can be used as the headphone output.



Steps & Connections

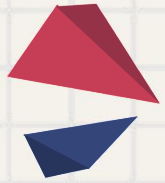
Step 4: Connection Between JAB2 and JAB3



- Audio Connection: Connect J5 on JAB3 to J11 on JAB2.
- Control Connection: Connect J12 on JAB3 to J9 on JAB2 . (Pop sound will be effectively eliminated under this connection.)

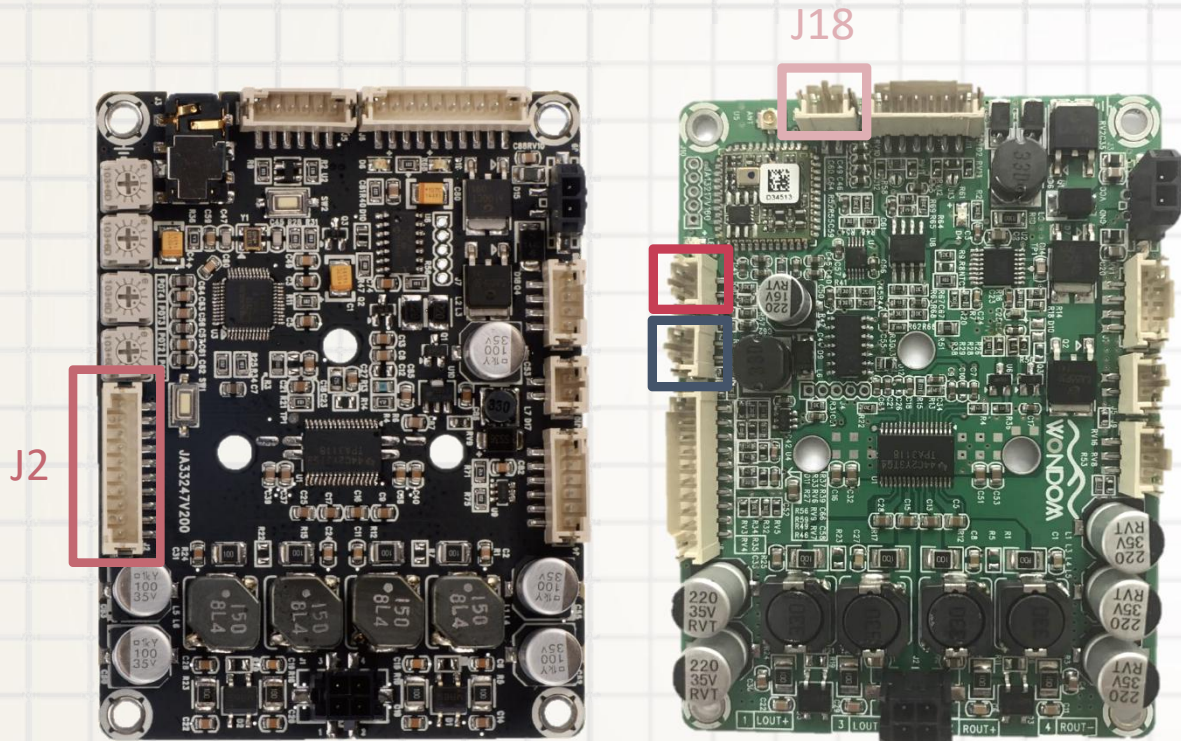
Note:

1. When JAB3 is used independently, Port J12 is used to be connected to switch cable.
2. When JAB3 is used to work with JAB2, make sure J9 on JAB2 and J12 on JAB3 is connected by a 3Pos cable, then J5 on JAB2 will be used to be connected to switch cable.



Steps & Connections

Step 5: External LED Indicator & Control



J7 Bluetooth LED Indicator



J8 MPPT LED Indicator

- Connect J7 on JAB2 to Bluetooth LED Indicator. Connect J8 on JAB2 to MPPT LED Indicator.
- J18 is connected to Bluetooth Switch (Short Pressing can cancel the Connection while Press and hold on can make the Bluetooth be off).

Note:

1. Either J6 on JAB2 or J6 on JAB3 can be connected to Interface Extension Board.
2. J2 on JAB3 is extension port of DSP and digital output. For this version, the function is not available now.



THANKS FOR YOUR ATTENTION

Sure Electronics Co., Ltd.

Superior Unified Real Enduring
Design Form Strength Quality

Address: 3F, Building F6, No.9, Weidi Road, Xianlin,
Qixia Dist., Nanjing, China
Skype: sureelectronics
Website: www.sure-electronics.com

Copyright © 2017 Sure Electronics Co., Ltd.