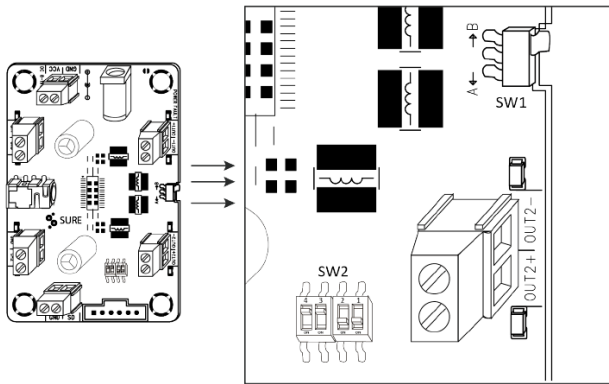


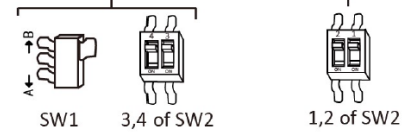
Wondom TPA208 MkII – Anschlussplan / Connections

Connection

The default setting of this amplifier board is stereo mode and single-ended input.



BTL/PBTL Configuration SE.&DIFF. Channel Selection



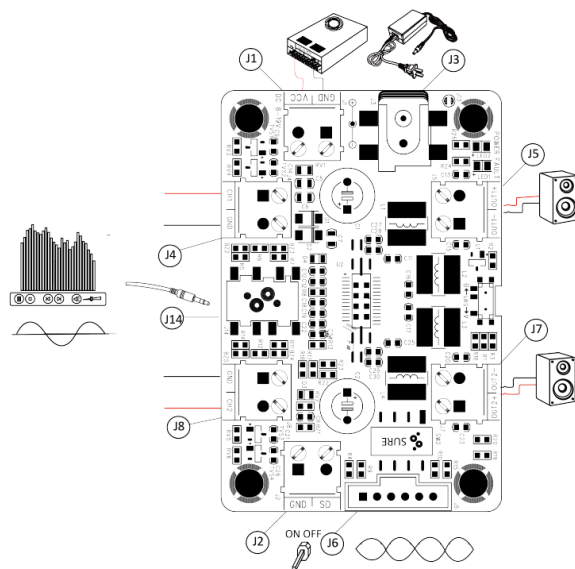
BTL/PBTL Configuration

Mode \ SW Position	SW1	3,4 of SW2
Stereo	B	OFF
Mono	A	ON

SE. & DIFF. Channel Selection

Input Method \ SW Position	1,2 of SW2
Single-ended	ON
Differential	OFF

Stereo Mode



Power Supply Connector:
 · J3 DC8-19V power adapter socket Jack 5.5mm/2.1mm
 · J1 Terminal Block RJ128

	Pin	Function
J1	■	GND
	●	VCC

Mute Setting:
 · J2 Terminal Block RJ128

	Pin	Function
J2	■	GND
	●	SD

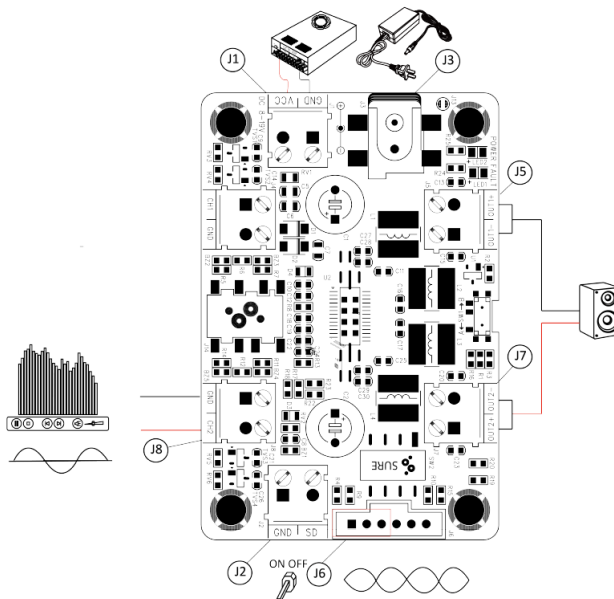
Audio Input Connector:
 · J14 3.5mm AUX- in Jack
 · J4, J8 Terminal Block RJ128
 · J6, Molex 6-Pos-2.54mm, (Differential Input)

	Pin	Function
J4	■	CH1
	●	GND
J8	■	GND
	●	CH2
J6	■	DIFF1_N
	●	SGND
	■	DIFF1_P
	●	DIFF2_N
	●	SGND
	●	DIFF2_P

Speaker Output Connector:
 · J5, J7 Terminal Block RJ128

	Pin	Function
J5	■	OUT1-
	●	OUT1+
J7	■	OUT2+
	●	OUT2-

Mono Mode



Power Supply Connector:
 · J3 DC8-19V power adapter socket Jack 5.5mm/2.1mm
 · J1 Terminal Block RJ128

Speaker Output Connections:
 · J5, J7 Terminal Block RJ128

	Description
J5	Negative polarity of mono output
J7	Positive polarity of mono output

***Notes:** For mono output, OUT2+ and OUT2- are short circuited as the positive of speaker output, and OUT1- and OUT1+ are short circuited as the negative of speaker output.

Audio Input Connector:
 · J8 is used for single-ended input terminal block in mono mode.
 · The pin of J6 in red box is used for differential input in mono mode.

Mute Setting:
 · J2 Terminal Block RJ128